



2017 Organizational Charts

Organizational charts are provided to show a visible structure of the various departments within Rollins College. They are intended to help identify roles, understand the relationships between departments and staff members, and clarify the chain of command. They can also be utilized to create budgets, design teams, and identify staffing needs.

The list below contains links to specific departmental charts. The Home link at the bottom, right-hand side of each chart will return you to this page.

[Board of Trustees / Organizational Overview](#)

[President](#)

[Vice President, Academic Affairs & Provost](#)

[Dean, College of Liberal Arts](#)

[Dean, Crummer Graduate School of Business](#)

[Dean, Hamilton Holt School](#)

[Director, Cornell Fine Arts Museum](#)

[Director, Olin Library](#)

[Vice President, Business and Finance & Treasurer](#)

[Associate VP, Finance & Assistant Treasurer](#)

[Assistant VP, Human Resources & Risk Management](#)

[Chief Information Officer](#)

[Assistant VP, Business Services](#)

[AVP, Campus Safety and Security](#)

[AVP, Facilities Management](#)

[Commercial / Residential Property Manager](#)

[Vice President, Enrollment Management and Marketing](#)

[Director, Admissions](#)

[Director, International Admissions](#)

[Director, Financial Aid](#)

[Associate VP, Marketing & Communications](#)

[Vice President, Institutional Advancement](#)

[Sr. Dir, Annual Giving & Advancement Services](#)

[Senior Director, Alumni Relations](#)

[Assistant VP, Development](#)

[Vice President, Student Affairs](#)

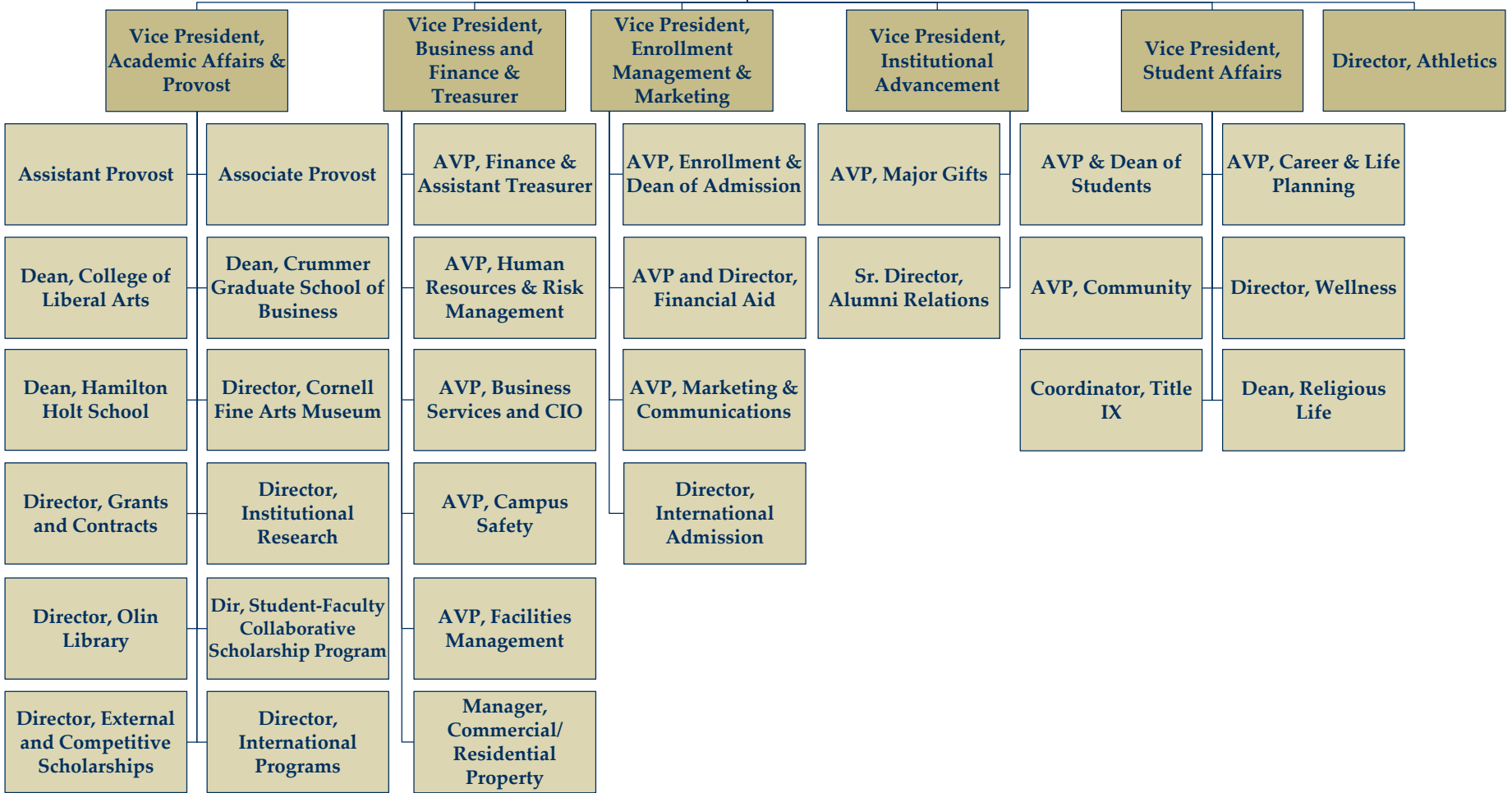
[AVP, Student Affairs and Dean of Students](#)

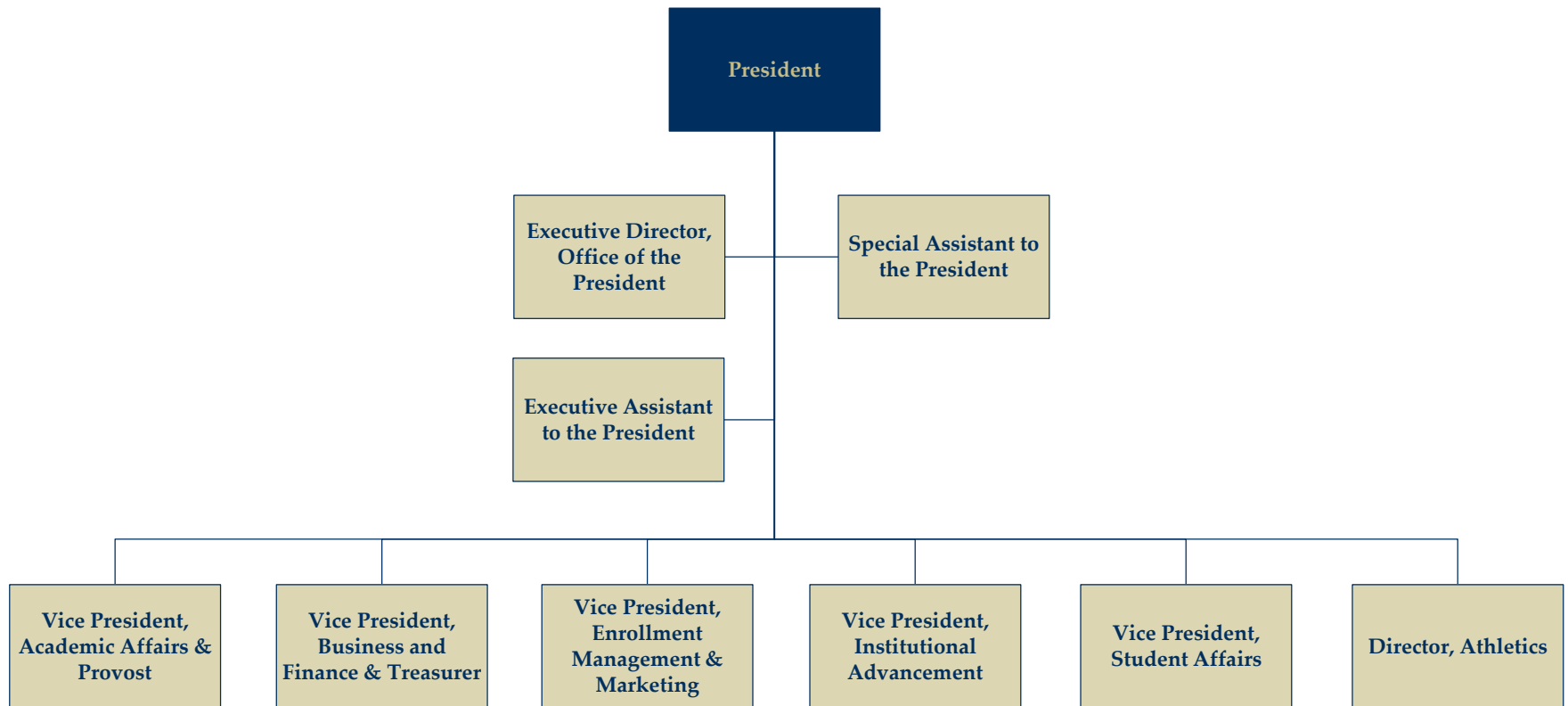
[Director, Wellness](#)

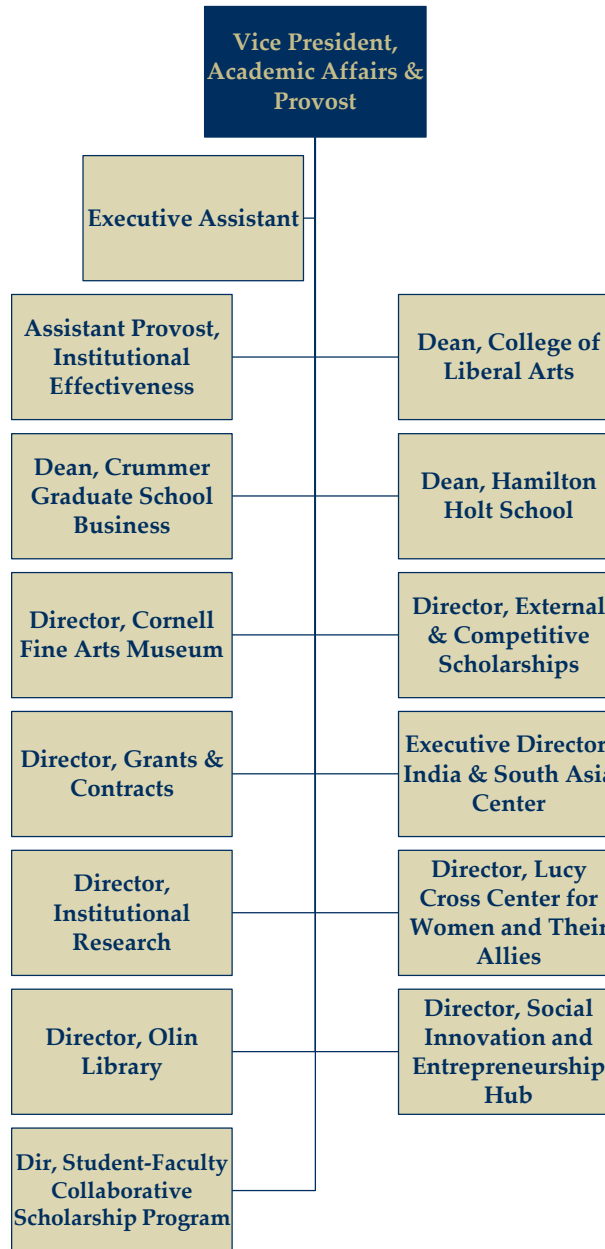
[Lord Family AVP, Student Affairs – Community](#)

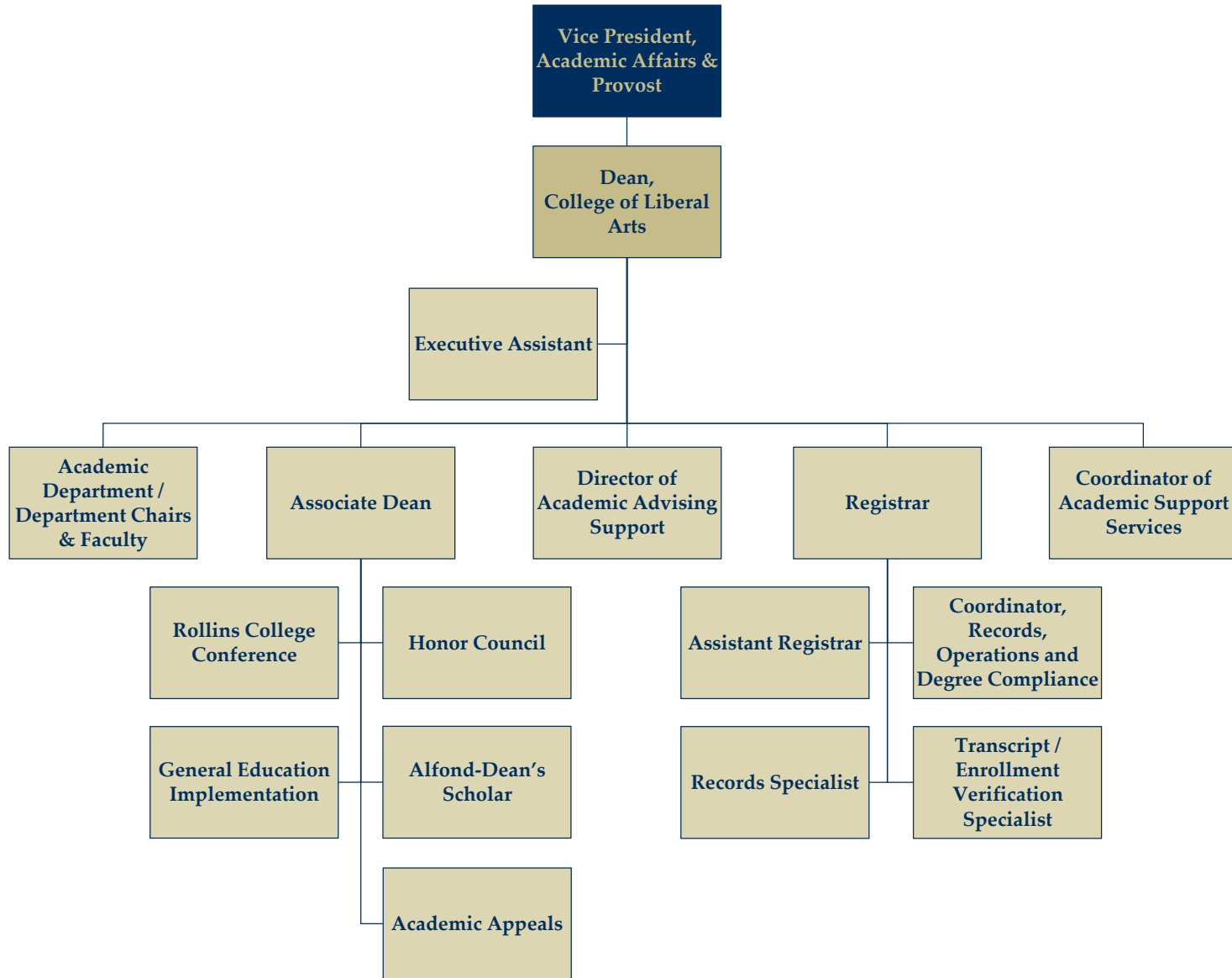
[AVP, Student Affairs, Career & Life Planning](#)

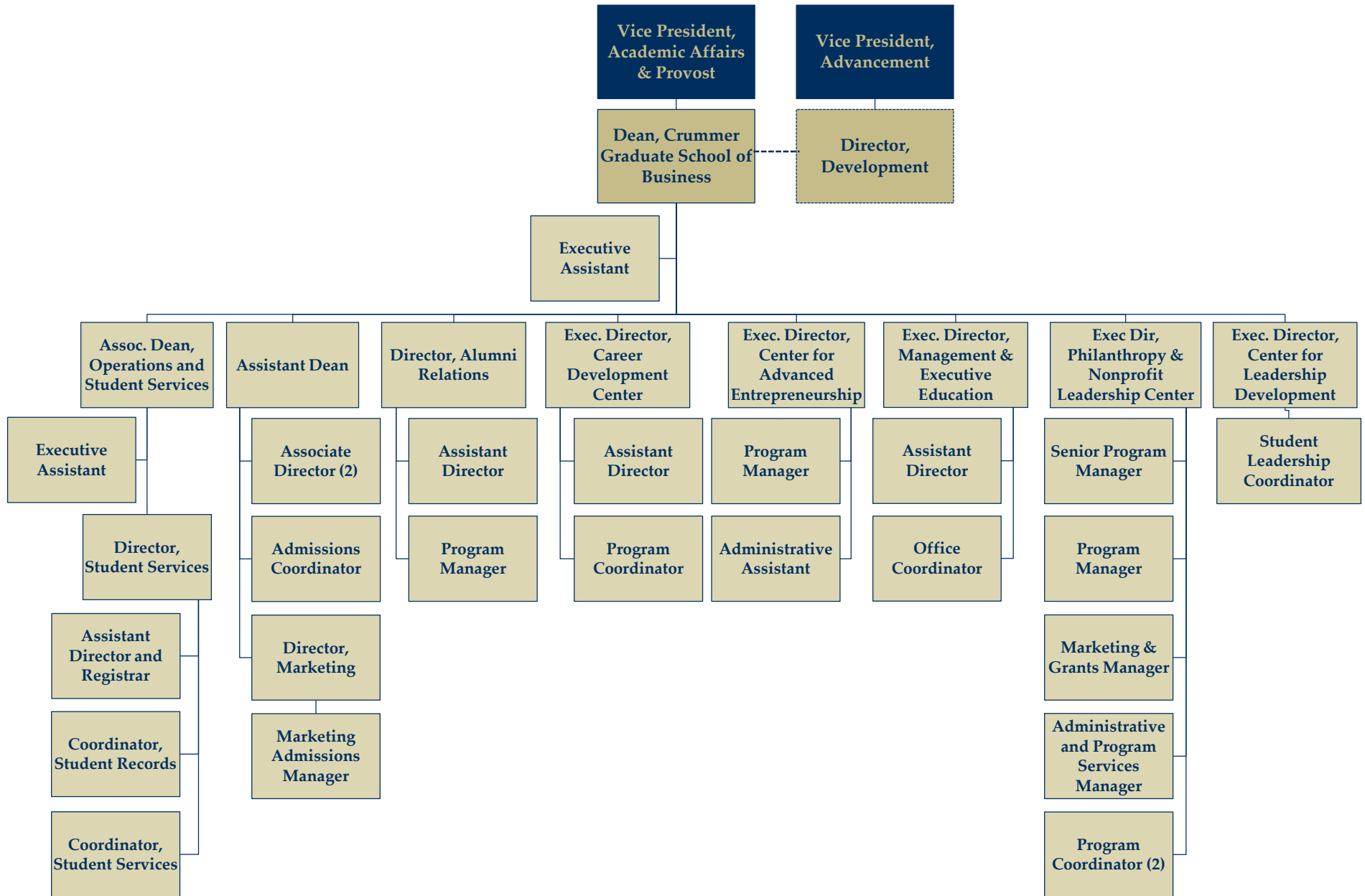
[Director, Athletics](#)

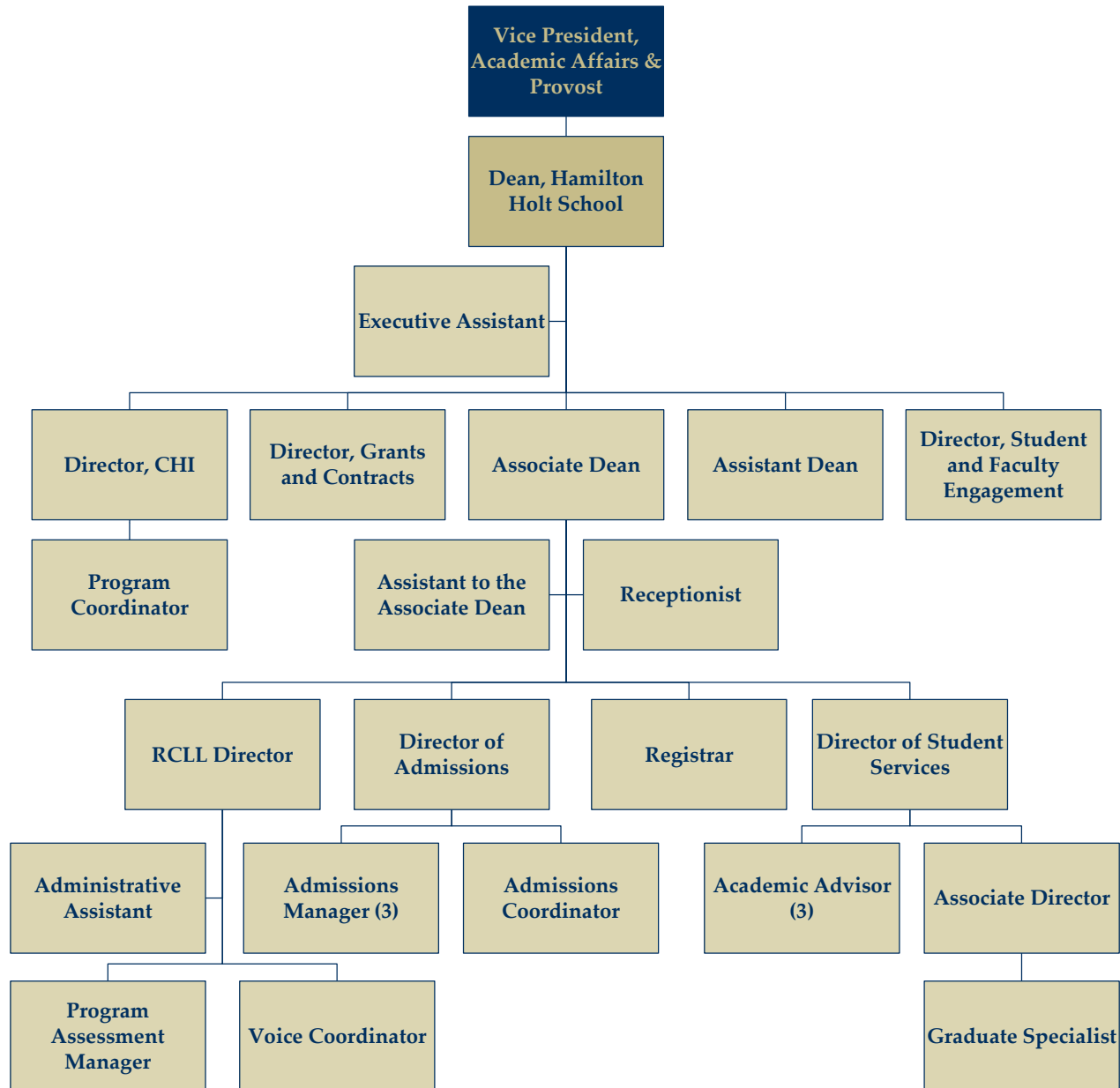


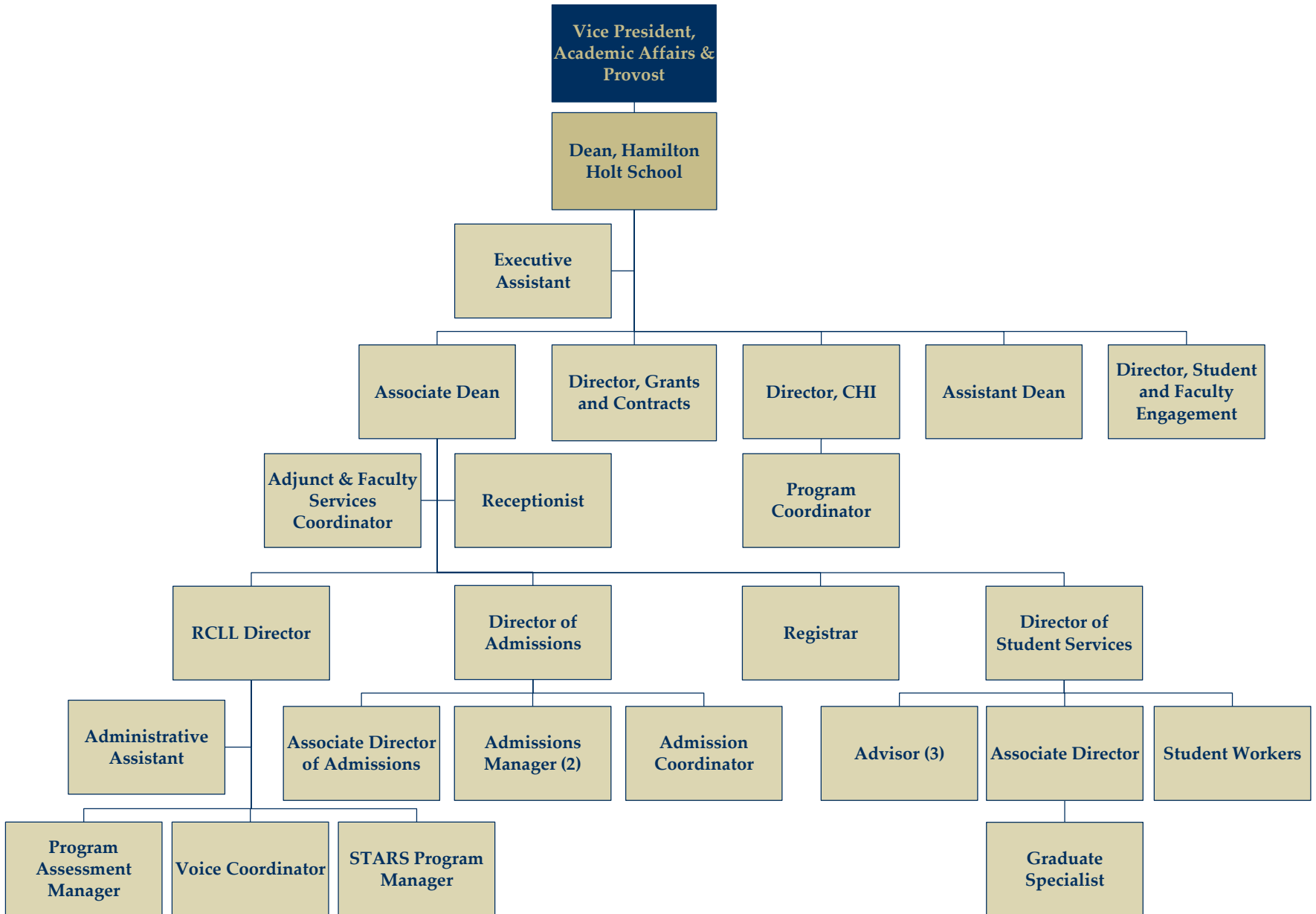


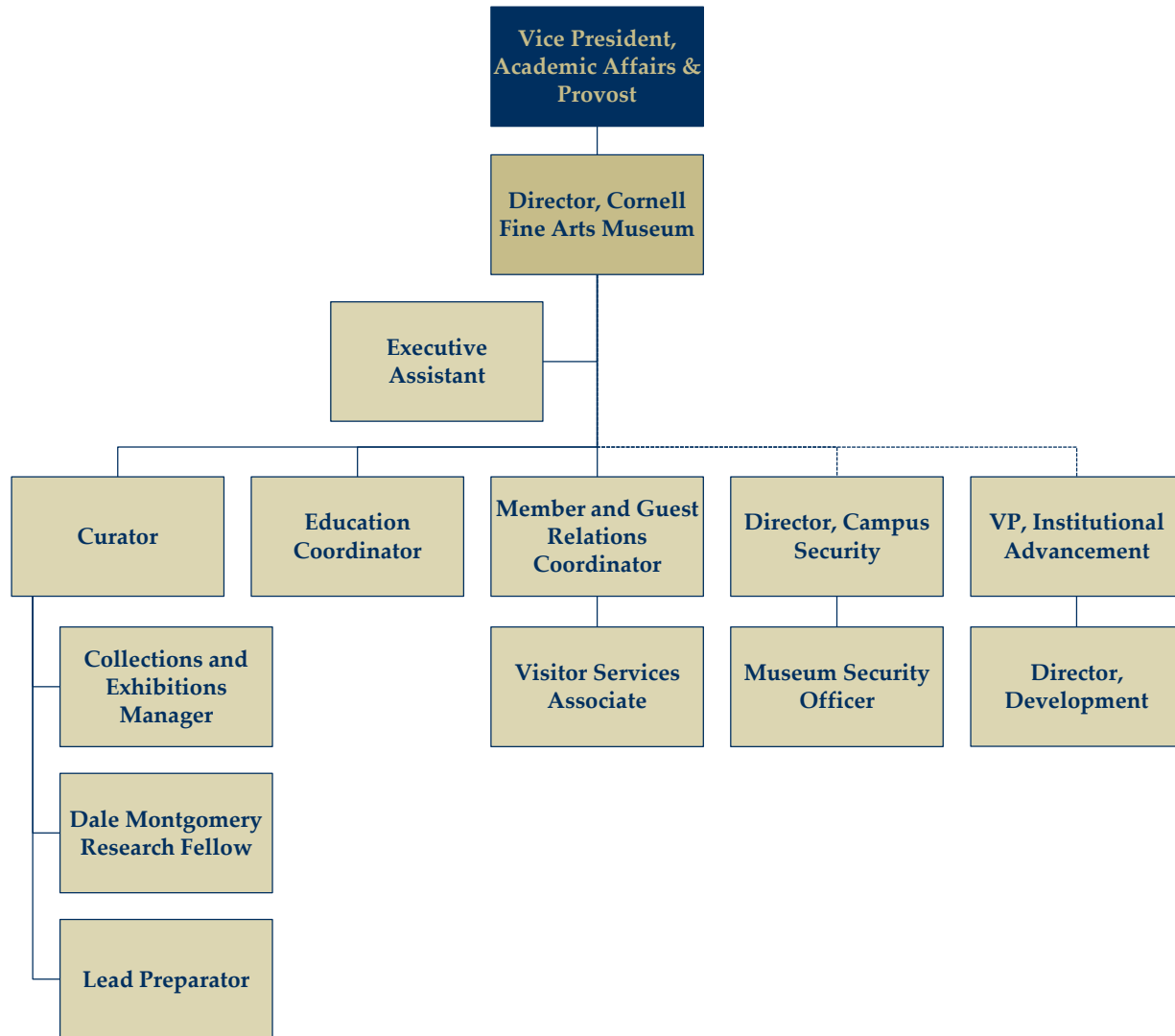


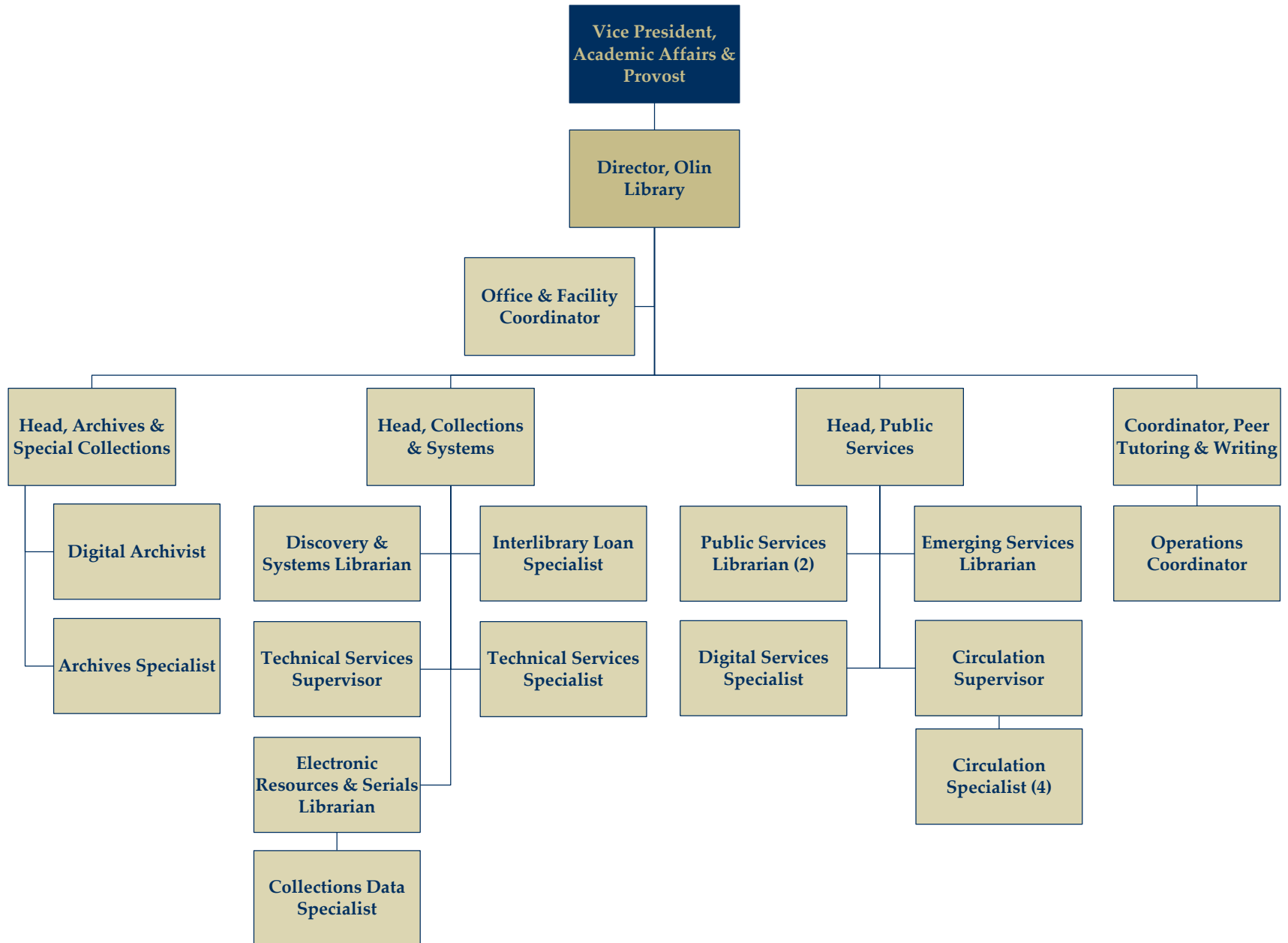


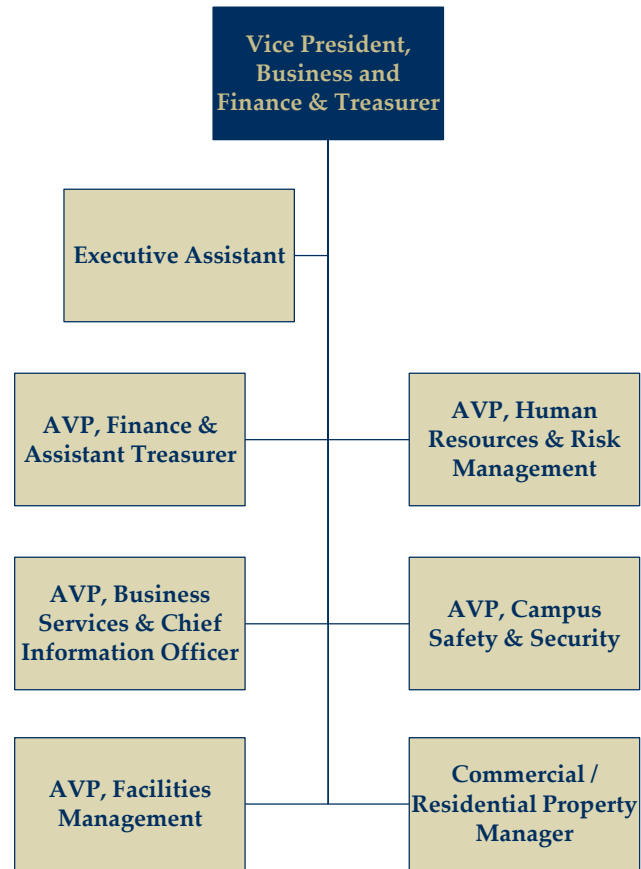


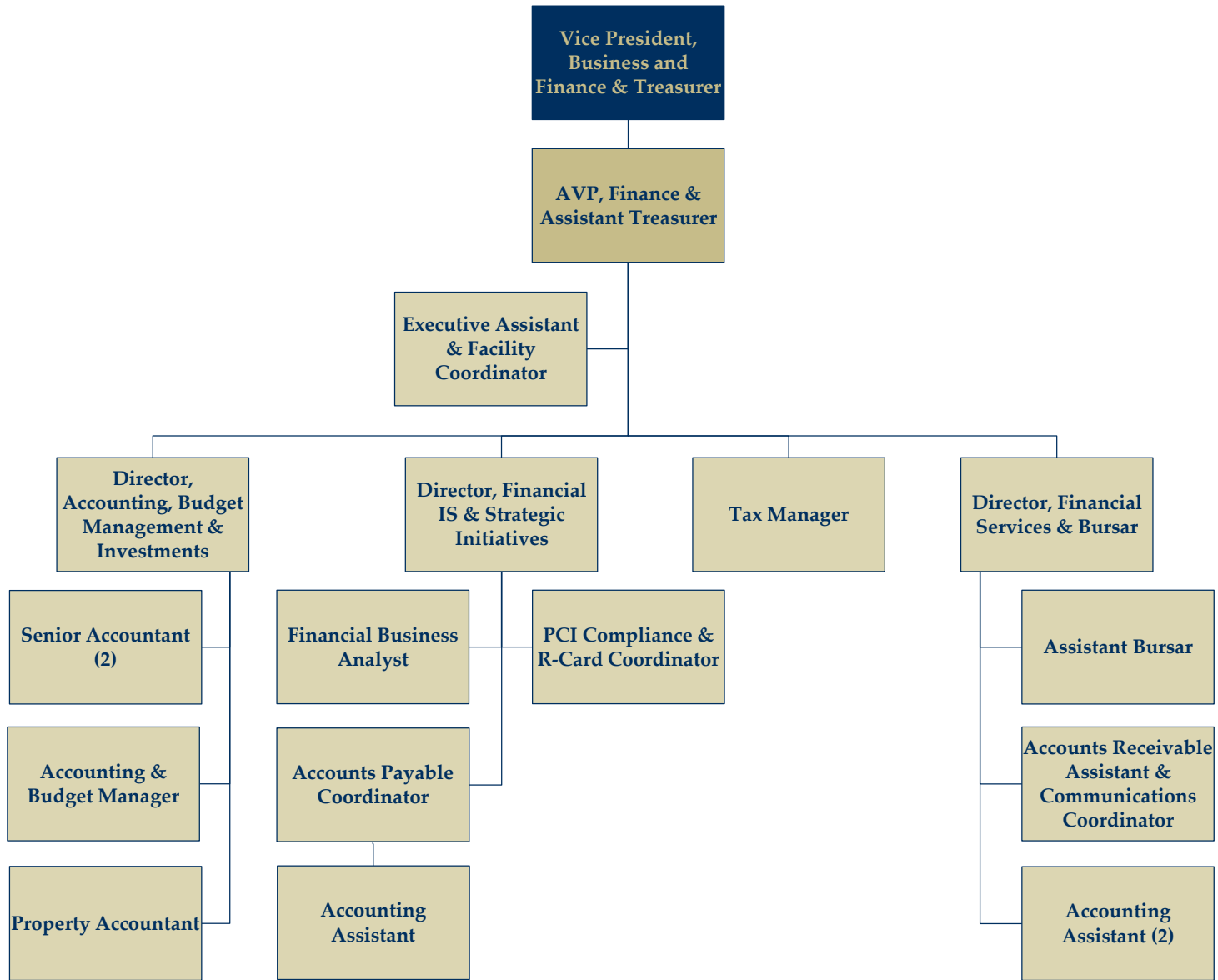


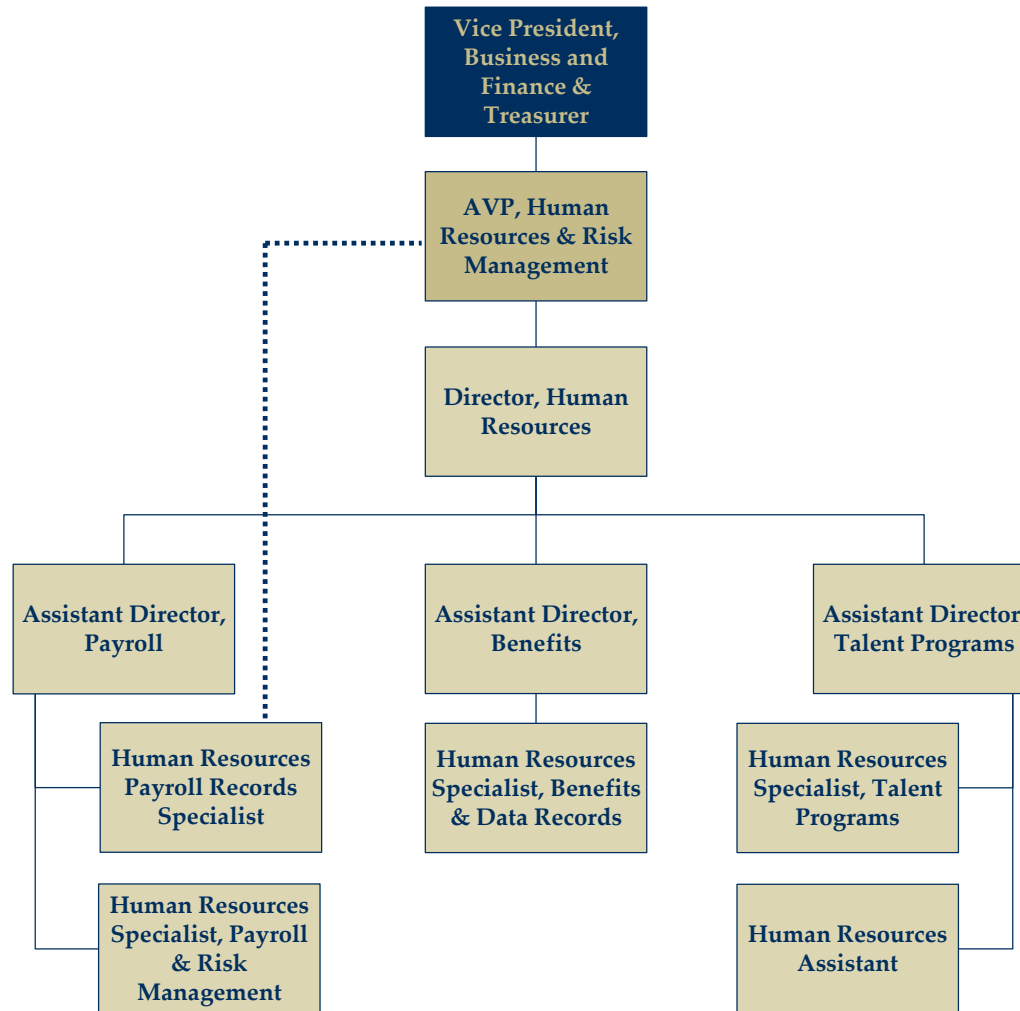














Vice President,
Business and
Finance &
Treasurer

Chief Information
Officer

